



NAKSHATRA

MANNAGUDDA

#AWALKAMONGTHESTARS



NAKSHATRA

— MANNAGUDDA —



38th Star in Land Trades Galaxy

A star is first born out of dust, the dust of an idea. The process of ideation commences, sparks fly as thoughts collide and generate tremendous energy. This energy, when converted to rigour, finally culminates in a stunningly beautiful and divine creation. Thus, was born the 38th star 'Nakshatra', in the Land Trades galaxy.

Nakshatra was conceived as a premium project for a select few who appreciate the good things in life. A seamless amalgamation of luxury and beauty, that makes your wish come true.

#AWalkAmongTheStars is a Land Trades promise that will leave you star-struck.

exclusive
**2,3 & 4 BHK
LIVING**



Pristine By Day

Starry By Night

Mangaluru is a beautiful coastal city located on the Western coast of the South Indian peninsula. It is blessed with sun-kissed beaches and amazing architectural marvels. Its home to the famous 9th-century Mangaladevi Temple, from where this city derives its name.

Within this bustling, trade city lies a green, serene pocket called Manna Gudda, home to the goddess Mangaladevi, revered and worshipped by the locals for centuries. Known for its fertile soil, lush green cover and also for its proximity to the national highway, the Nakshatra project lies barely a few metres away, overlooking the temple in the North direction. Nothing else in Mangaluru beats the prime location of Manna Gudda where you too, can now take **#AWalkAmongTheStars**

Charmed Lifestyle for a
Fortunate Fifty

Stars shine bright, high up and far away in the night sky. Their distance- the very symbol of aspiration, beauty and opulence. With just 50 exquisite flats you can now be among the fortunate few to own a piece of this starry brilliance.

Backed by years of commitment and built over a solid reputation, Land Trades brings to you another shining star that shall fulfill your desire of owning a dream home in Mangaluru. Do not miss this once-in-a-lifetime opportunity to secure your spot among the stars.

#AWalkAmongTheStars



“ Charmed Lifestyle for a Fortunate Fifty ”

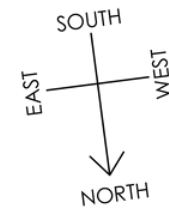




② & ③ 2 BHK Units 1292 Sq.ft

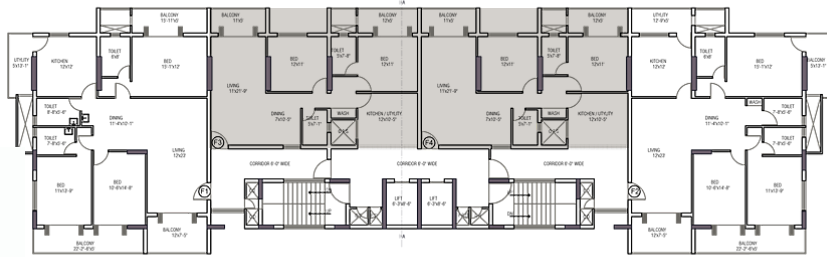
① 3 BHK Units 2057 Sq.ft

④ 3 BHK Units 2040 Sq.ft

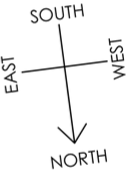


KEY PLAN - 3rd to 13th FLOOR

Disclaimer: The information depicted herein viz, master plans, floor plans, furniture layout, fittings, illustrations, specifications, designs, dimensions, rendered views, colours, amenities and facilities are subject to change without notification as may be required by the relevant authorities or the developer's architect, and cannot form part of an offer or contract. Whilst every care is taken in providing this information, the developer cannot be held liable for variations. All illustrations and pictures are artist's impressions only. The information is subject to variations, additions, deletions, substitutions and modifications as may be recommended by the company's architect and/or the relevant approving authorities. The developer is wholly exempt from any liability on account of claim in this regard. (1 Square mtr = 10.764 Square feet)



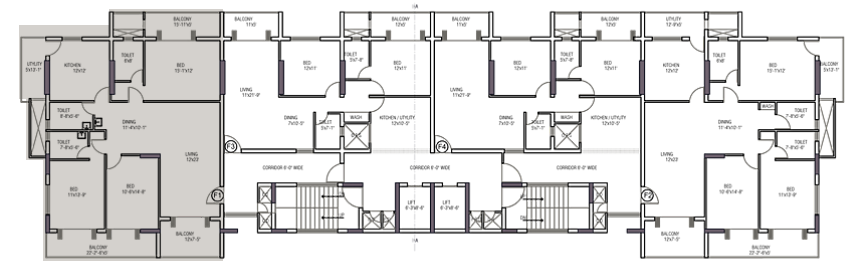
KEY PLAN



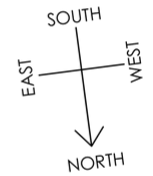
2 BEDROOM UNIT

2 BEDROOMS + 2 BATHROOMS | 1292 Sq.ft

Disclaimer: The information depicted herein viz, master plans, floor plans, furniture layout, fittings, illustrations, specifications, designs, dimensions, rendered views, colours, amenities and facilities are subject to change without notification as may be required by the relevant authorities or the developer's architect, and cannot form part of an offer or contract. Whilst every care is taken in providing this information, the developer cannot be held liable for variations. All illustrations and pictures are artist's impressions only. The information is subject to variations, additions, deletions, substitutions and modifications as may be recommended by the company's architect and/or the relevant approving authorities. The developer is wholly exempt from any liability on account of claim in this regard. (1 Square mtr = 10.764 Square feet)



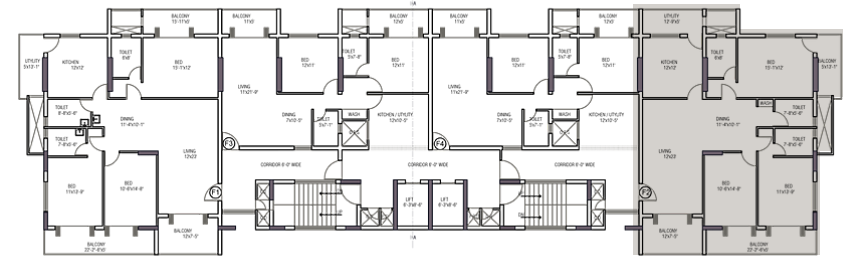
KEY PLAN



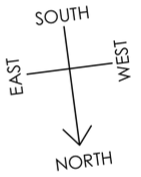
3 BEDROOM UNIT | TYPE 1

3 BEDROOMS + 3 BATHROOMS | 2057 Sq.ft

Disclaimer: The information depicted herein viz, master plans, floor plans, furniture layout, fittings, illustrations, specifications, designs, dimensions, rendered views, colours, amenities and facilities are subject to change without notification as may be required by the relevant authorities or the developer's architect, and cannot form part of an offer or contract. Whilst every care is taken in providing this information, the developer cannot be held liable for variations. All illustrations and pictures are artist's impressions only. The information is subject to variations, additions, deletions, substitutions and modifications as may be recommended by the company's architect and/or the relevant approving authorities. The developer is wholly exempt from any liability on account of claim in this regard.
 (1 Square mtr = 10.764 Square feet)



KEY PLAN



3 BEDROOM UNIT | TYPE 2

3 BEDROOMS + 3 BATHROOMS | 2040 Sq.ft

Disclaimer: The information depicted herein viz, master plans, floor plans, furniture layout, fittings, illustrations, specifications, designs, dimensions, rendered views, colours, amenities and facilities are subject to change without notification as may be required by the relevant authorities or the developer's architect, and cannot form part of an offer or contract. Whilst every care is taken in providing this information, the developer cannot be held liable for variations. All illustrations and pictures are artist's impressions only. The information is subject to variations, additions, deletions, substitutions and modifications as may be recommended by the company's architect and/or the relevant approving authorities. The developer is wholly exempt from any liability on account of claim in this regard. (1 Square mtr = 10.764 Square feet)

2



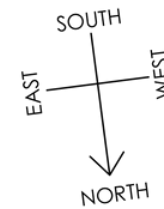
1

3

① 4 BHK Units 2511 Sq.ft

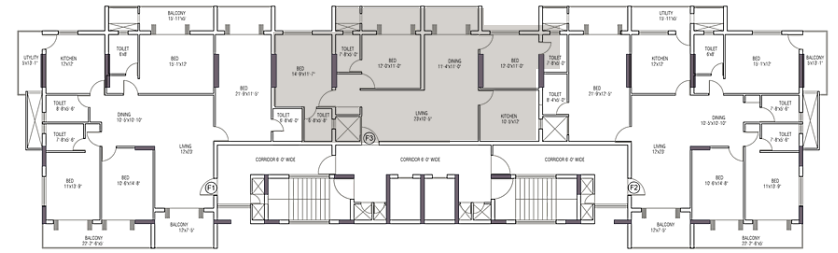
② 3 BHK Units 1641 Sq.ft

③ 4 BHK Units 2526 Sq.ft

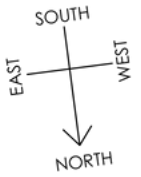


KEY PLAN - 14th & 15th FLOOR

Disclaimer: The information depicted herein viz, master plans, floor plans, furniture layout, fittings, illustrations, specifications, designs, dimensions, rendered views, colours, amenities and facilities are subject to change without notification as may be required by the relevant authorities or the developer's architect, and cannot form part of an offer or contract. Whilst every care is taken in providing this information, the developer cannot be held liable for variations. All illustrations and pictures are artist's impressions only. The information is subject to variations, additions, deletions, substitutions and modifications as may be recommended by the company's architect and/or the relevant approving authorities. The developer is wholly exempt from any liability on account of claim in this regard. (1 Square mtr = 10.764 Square feet)



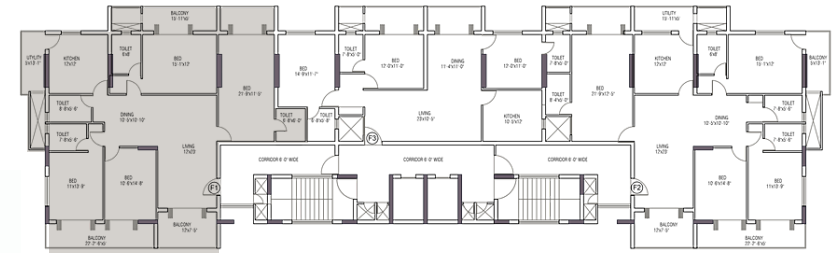
KEY PLAN



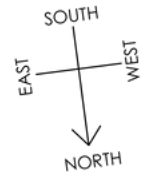
3 BEDROOM UNIT | TYPE 3

3 BEDROOMS + 3 BATHROOMS | 1641 Sq.ft

Disclaimer: The information depicted herein viz, master plans, floor plans, furniture layout, fittings, illustrations, specifications, designs, dimensions, rendered views, colours, amenities and facilities are subject to change without notification as may be required by the relevant authorities or the developer's architect, and cannot form part of an offer or contract. Whilst every care is taken in providing this information, the developer cannot be held liable for variations. All illustrations and pictures are artist's impressions only. The information is subject to variations, additions, deletions, substitutions and modifications as may be recommended by the company's architect and/or the relevant approving authorities. The developer is wholly exempt from any liability on account of claim in this regard. (1 Square mtr = 10.764 Square feet)



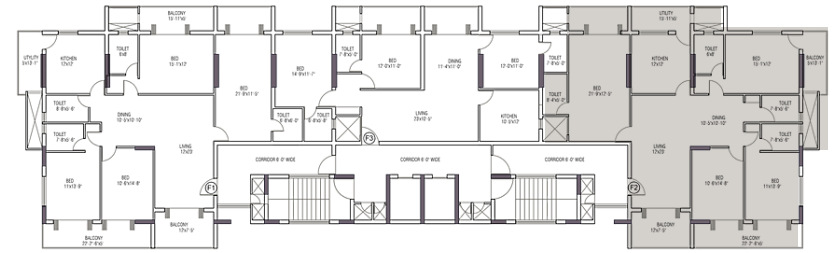
KEY PLAN



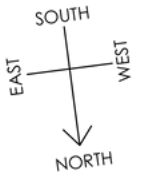
4 BEDROOM UNIT | TYPE 1

4 BEDROOMS + 4 BATHROOMS | 2511 Sq.ft

Disclaimer: The information depicted herein viz, master plans, floor plans, furniture layout, fittings, illustrations, specifications, designs, dimensions, rendered views, colours, amenities and facilities are subject to change without notification as may be required by the relevant authorities or the developer's architect, and cannot form part of an offer or contract. Whilst every care is taken in providing this information, the developer cannot be held liable for variations. All illustrations and pictures are artist's impressions only. The information is subject to variations, additions, deletions, substitutions and modifications as may be recommended by the company's architect and/or the relevant approving authorities. The developer is wholly exempt from any liability on account of claim in this regard.
 (1 Square mtr = 10.764 Square feet)



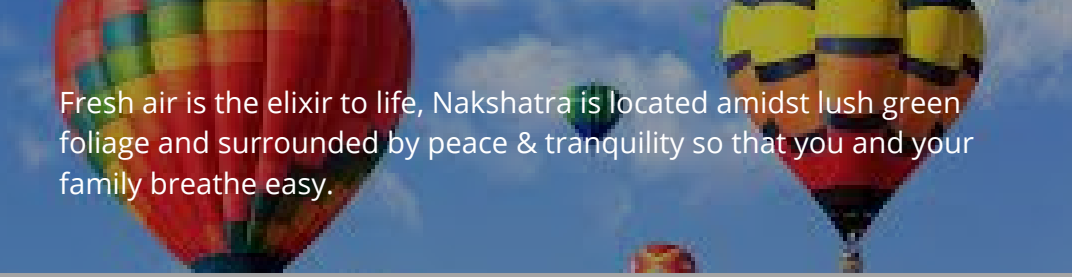
KEY PLAN



4 BEDROOM UNIT | TYPE 2

4 BEDROOMS + 4 BATHROOMS | 2526 Sqft

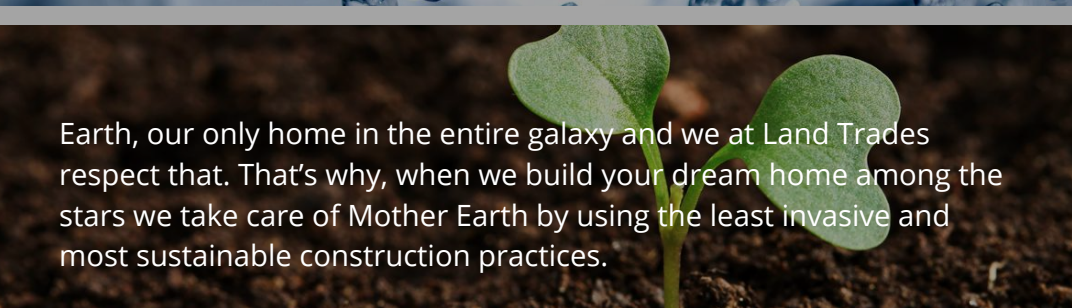
Disclaimer: The information depicted herein viz, master plans, floor plans, furniture layout, fittings, illustrations, specifications, designs, dimensions, rendered views, colours, amenities and facilities are subject to change without notification as may be required by the relevant authorities or the developer's architect, and cannot form part of an offer or contract. Whilst every care is taken in providing this information, the developer cannot be held liable for variations. All illustrations and pictures are artist's impressions only. The information is subject to variations, additions, deletions, substitutions and modifications as may be recommended by the company's architect and/or the relevant approving authorities. The developer is wholly exempt from any liability on account of claim in this regard. (1 Square mtr = 10.764 Square feet)



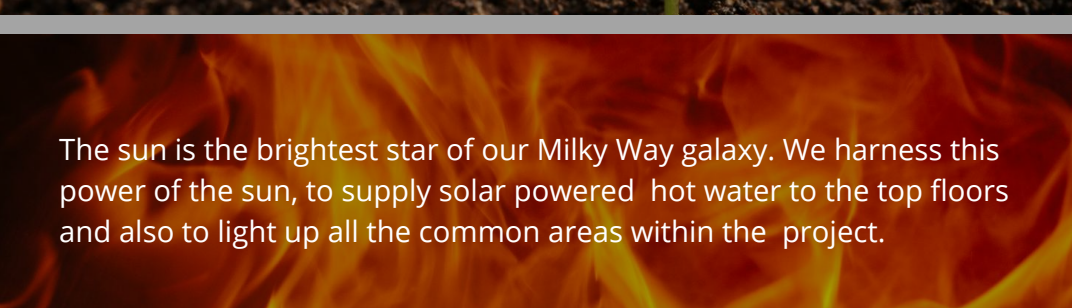
Fresh air is the elixir to life, Nakshatra is located amidst lush green foliage and surrounded by peace & tranquility so that you and your family breathe easy.



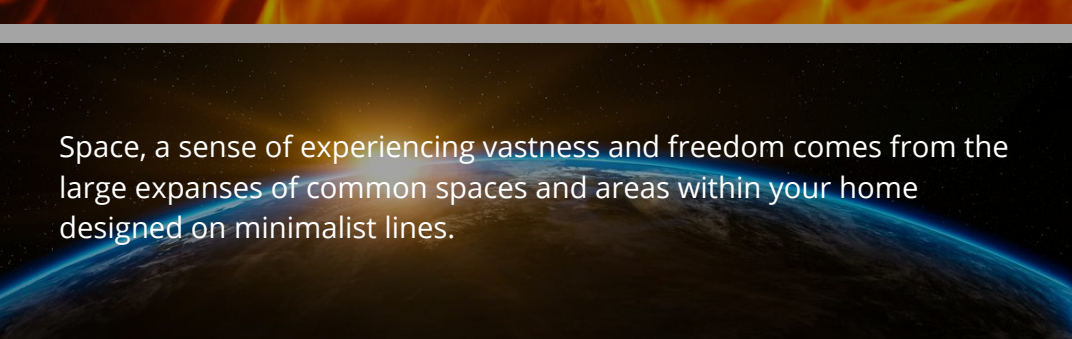
Water is the most precious natural resource that sustains all life. Through Rain Water Harvesting we ensure that at Nakshatra water is always pure and abundant.



Earth, our only home in the entire galaxy and we at Land Trades respect that. That's why, when we build your dream home among the stars we take care of Mother Earth by using the least invasive and most sustainable construction practices.




The sun is the brightest star of our Milky Way galaxy. We harness this power of the sun, to supply solar powered hot water to the top floors and also to light up all the common areas within the project.



Space, a sense of experiencing vastness and freedom comes from the large expanses of common spaces and areas within your home designed on minimalist lines.

Sustainability in the **Lap of Luxury**



While Nakshatra embodies #AWalkAmongTheStars, we focus equally on the environment around us because you deserve 5-star Eco-living, that's co-existing as symbiotically with the environment as possible.

#AWalkAmongTheStars



Aashna, Yemmekere

Solitaire, Hathill

Vasundhara, Urva

Sanskriti, Mangaladevi

Pushkar, Car Street

Astoria, Balmatta

Ourania, Kadri

Danube, Balmatta

Brookside, Morgan's Gate

Insignia, Valencia

Melody, Bendoor

Vijaya, Lobo Lane

Minerva, Bejai

Sai Grandeur, Jail Road

Habitat one 54, Derebail

Rehoboth, Bejai

Roopali, Bendorwell

Sai Prem, Mannagudda

Hathill Crest, Hat Hill

Aria, Alvares Road

Parin, Balmatta

Hillside Ferns, Shivbagh

Nakshatra, Mannagudda

Serene, Bejai

Olive, Bejai Kapikad

Maurishka Palace, Kadri Kambla

Adonia, Kadri

Orion, Lobo Lane

Aadheesh, Mg Road

Aquarius, Mallikatta

Milestone 25, Balmatta

Brookside, Morgan's Gate

Atlantis, Bendoorwell

Emerald Bay, Suratkal

Olive, Bejai Kapikad

Vijaya, Lobo Lane

Eesha, Lobo Lane

Hathill Crest, Hat Hill

Land Trades Galaxy

FEATURES

- Total Vastu Compliance
- Smart Door Lock
- Gymnasium
- Recreational Activity Center
- Covered Terrace
- Visitors Lobby
- Landscaped Open Areas
- Water Treatment Plant
- Centralized Reticulated Gas

SPECIFICATIONS

FLOORING : Vitrified tiles in all areas with spacer. VDF Flooring / Interlock paving for car parking and landscaped open areas.

WALLS : Internal walls finished with cement based putty with Interior emulsion paints. External walls are finished with weather coat primer and external emulsion paint.

KITCHEN : Kitchen platform is adorned with a granite slab on top and stainless steel sink. Provisions have been made for Washing Machine, Water purifier, exhaust fan & work areas.

DOORS & WINDOWS : Main entrance door-Hardwood main door frame and flush door shutter fitted with veneer finishing with melamine polish & hardwood door frames and laminated flush door shutter for bedrooms & UPVC / aluminium windows for bedrooms.

TOILET : Diverter set shower system for all Toilets, branded CP, faucets, branded range of ceramic sanitary-ware. UPVC/Aluminum ventilators with exhaust fan provision.

PLUMBING : Pressure checked plumbing and drainage lines to ensure total leak-proof drainage pipes for soil, waste and drainage systems.

ELECTRICAL WORK : Branded modular switches, concealed copper wiring with adequate number of points in all rooms. Bedrooms will have ac points & cable points will be provided in hall. MCB distribution panels for extra safety, automatic elevators for escalated comfort.

LOCATION MAP



Site Address : Gandhinagar, Mannagudda, Mangalore



KARNATAKA RERA NUMBER :

PRM/KA/RERA/1257/334/PR/200722/003498

ABOUT LAND TRADES

Land Trades has been in the business of constructing Residential, Commercial and Office spaces for the past 28 years. Across all our 38 projects, one thread that runs common is our commitment to quality and award-winning creativity.

The industry measures our success from the creation of 4.7 mil sq feet of space that we have created. But, for us the true measure of our success lies in the smiles of satisfaction we have generated on the faces of our 3000+ customers. Just like the stars in a galaxy are infinite, we aim to touch countless lives with every project we execute.

ADDRESS

Land Trades Builders & Developers
5th Floor, Milestone 25, Collectors Gate
Balmatta, Mangalore - 575003

FOR BOOKING CONTACT

- ☎ 8882 777 444
- ☎ 0824 24 25424 | 2423866
- ✉ sales@landtrades.in
- 🌐 www.landtrades.in

ARCHITECT :

ARCHI-TECHNICS

MANGALORE

CONSTRUCTION :

