



EMERALD BAY





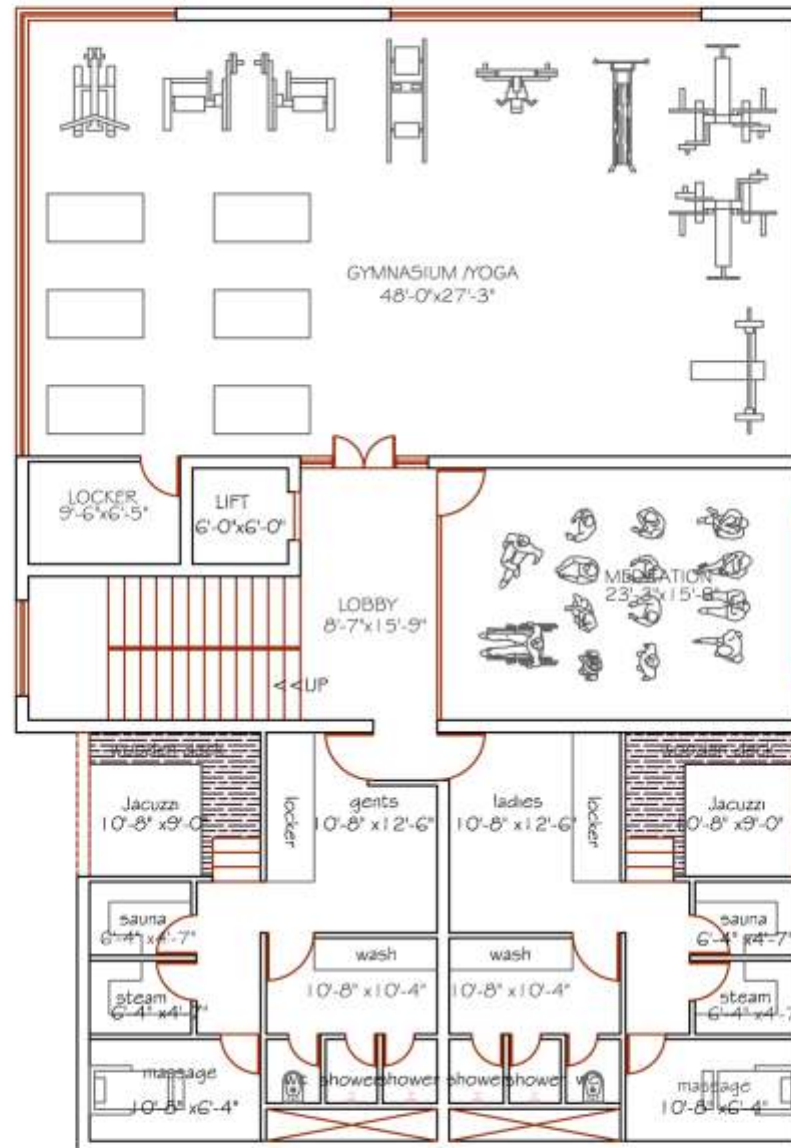


PROPOSED CLUB HOUSE FOR **EMERALD BAY** @ SURATHKAL , MANGALORE



GROUND FLOOR PLAN

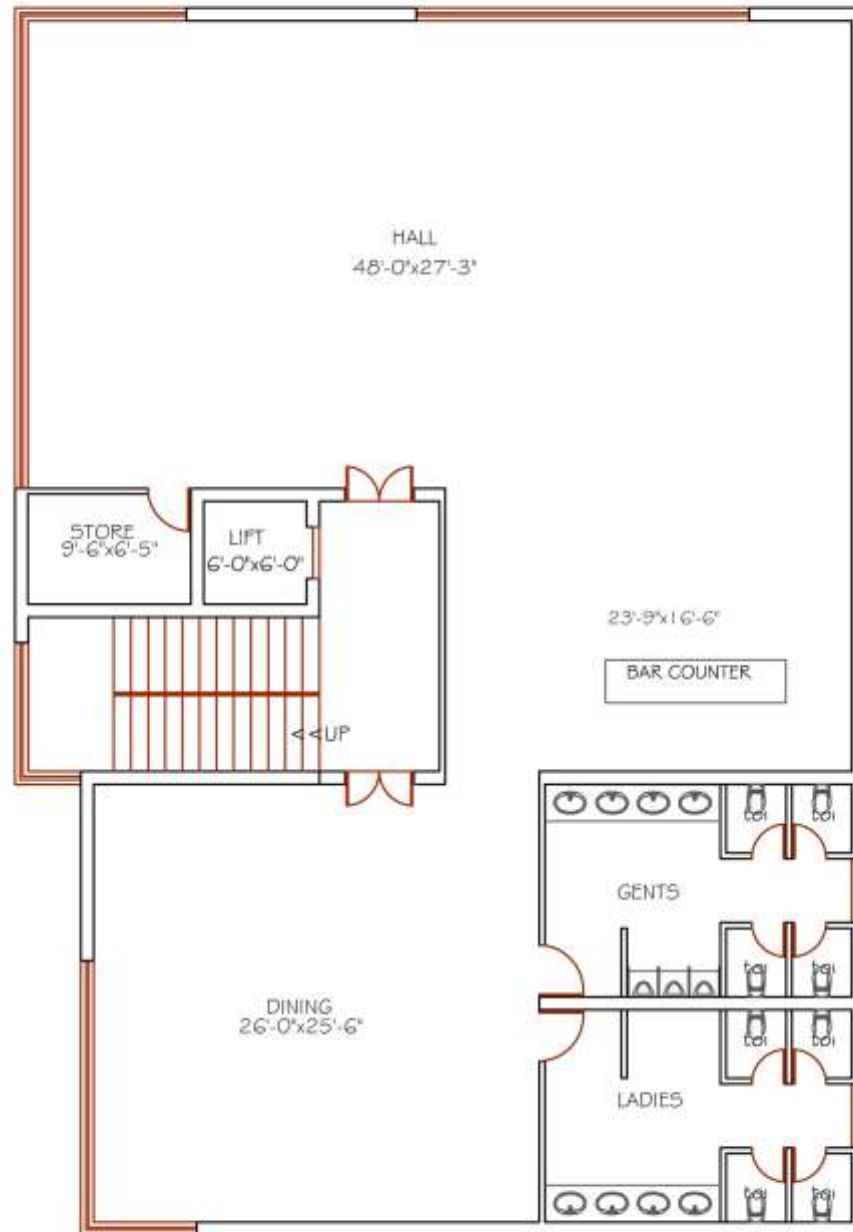
DRAWING TITLE GROUND FLOOR PLAN	DRAWN BY:	NO.	DATE	COMMENTS	DRAWN	CODE	ARCHI - TECHNICS POWER OF DESIGN BENDOO ROAD, UPPER BENDOO, MANGALORE - 575002. PHONE : 0824 656 4755, 656 3755
	CHECKED BY:						
	APPROVED BY:						
	DATE: 27-01-2014						
SCALE:							



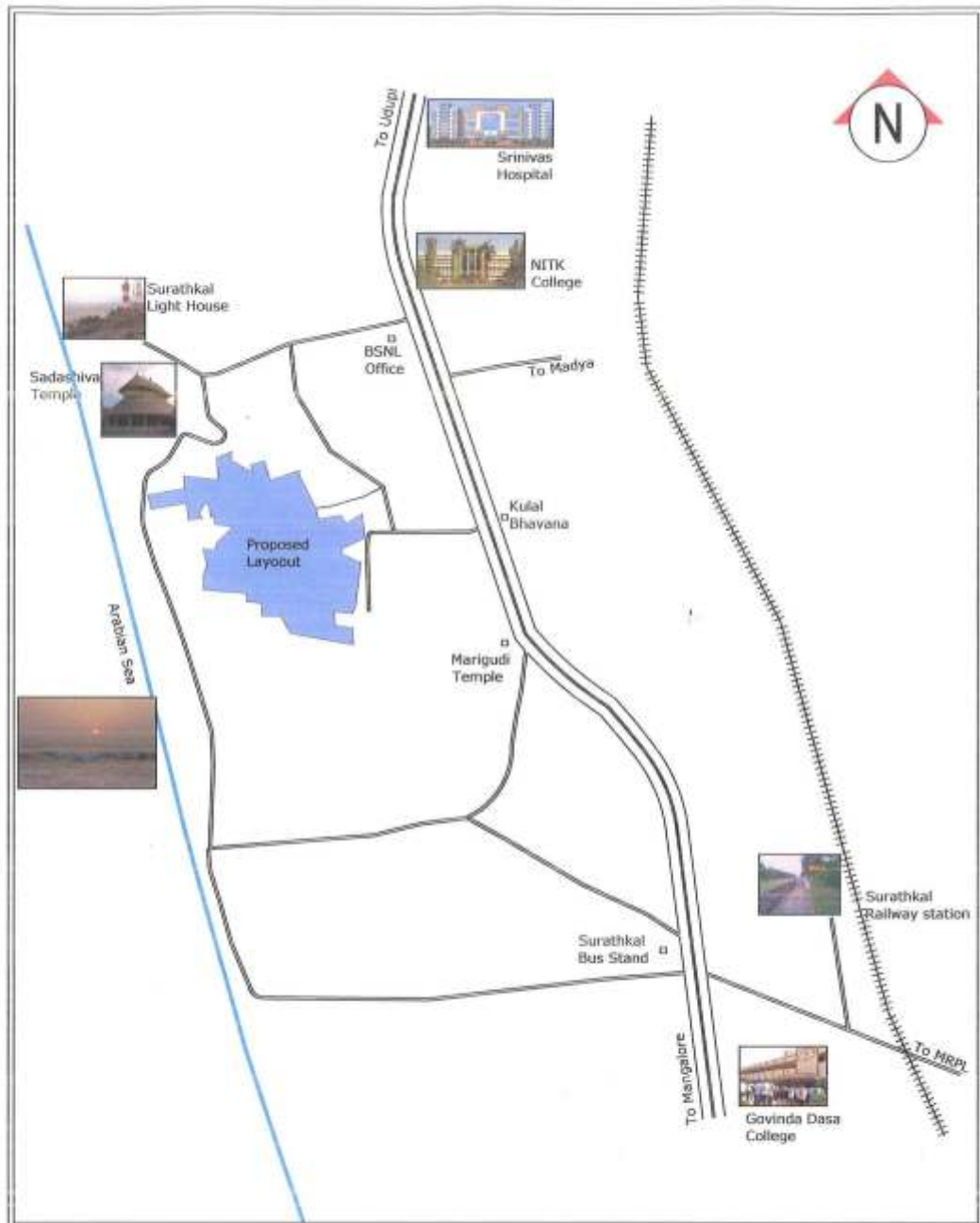
FIRST FLOOR PLAN

DRAWING TITLE	DRAWN BY	NO	DATE	COMMENTS	DRAWN	CHECK
FIRST FLOOR PLAN	CHECKED BY					
	APPROVED BY					
	DATE: 24/06/2024					
	SCALE:					

ARCHI - TECHNICS
 POWER OF DESIGN
 BENDOOOR ROAD, UPPER BENDOOOR,
 MANGALORE | 575002 | PHONE : 0824 656 4755, 656 3755



SECOND FLOOR PLAN



DISTANCE FROM:

- Surathkal Railway station 2.70 Kilometers
- Surathkal Bus stand 1.70 Kilometers
- NITK College & School 0.70 Kilometers
- Srinivasa Hospital 2.50 Kilometers
- Govinda Dasa College 2.30 Kilometers
- Kusal Bhavana Bus stand 0.35 Kilometers