

“ Take the Divine Path
to Success





Anantessh is an exclusive commercial development crafted for modern business. Its impressive presence, adjacent to the Flower Market, will mark it as an apt landmark of Car Street, a locality of Mangalore well known for being a hub of activity. With numerous temples in the vicinity, and an air of festivity all year round, Car Street is the sacred abode of tradition that people throng to. All of which make Anantessh the perfect venue for your business venture.

Anantessh is a well-designed business complex with wide variety of spaces to suit different requirements. There are spaces for showrooms, shops, boutiques, offices and consultant chambers, well supported with excellent amenities and facilities, comforts and conveniences. Wide passages and stairways and spacious common areas allow for ease of movement amidst high footfalls and enable customers to access you effortlessly.

A prime property promoted by Land Trades Builders & Developers, Anantessh comes to you with the assurance of the company's unflinching commitment for quality. And its impeccable track record of promoting a string of successful mega projects over the 27 years. Go ahead. Make Anantessh your new business address.



- BASEMENT PARKING
- TWO AUTOMATIC LIFTS
- BACKUP POWER GENERATOR
- CCTV IN COMMON AREAS



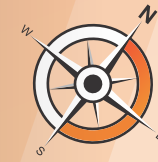
Created for infinity, Blessed with divinity.



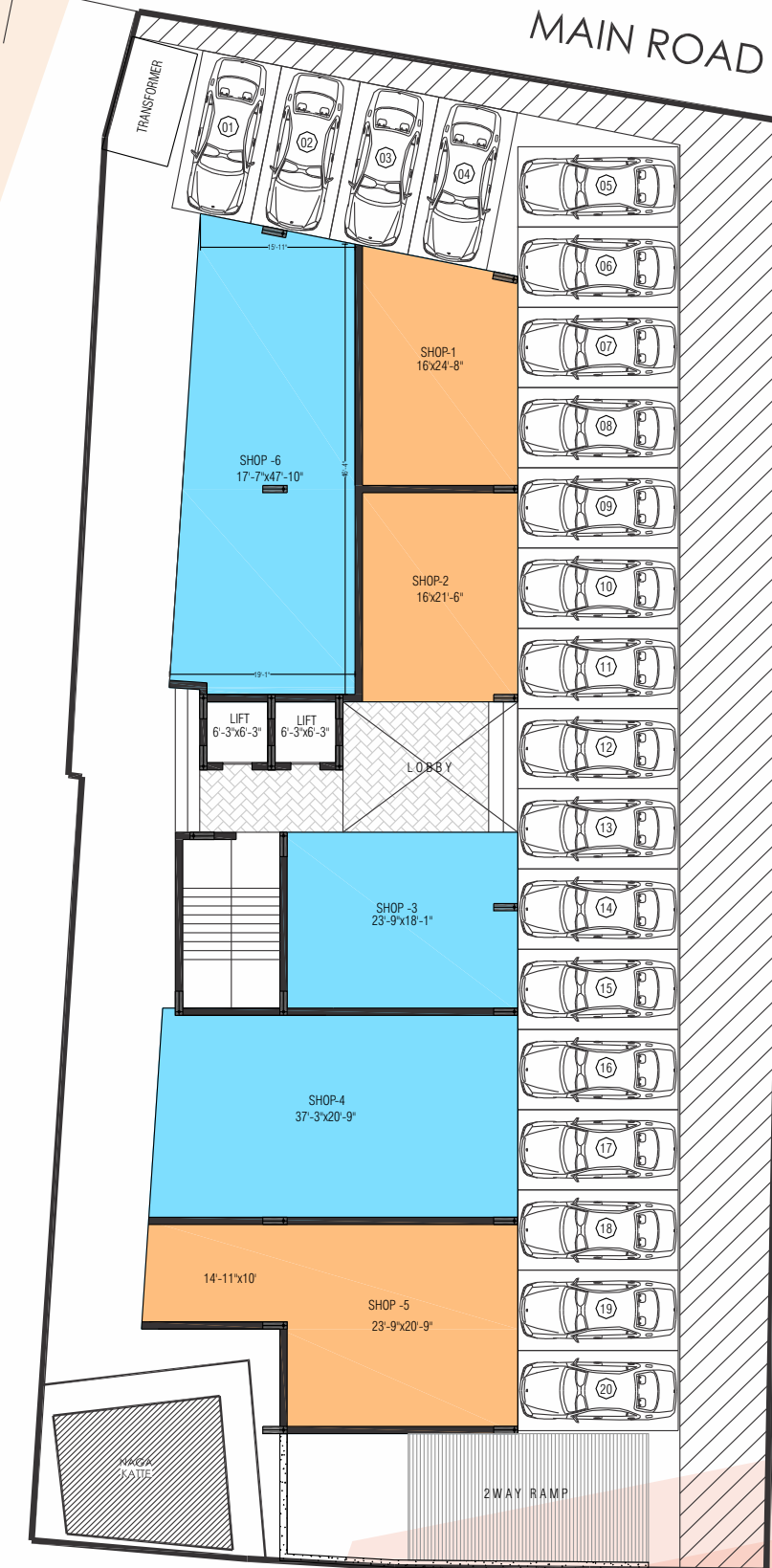


SPECIFICATIONS

- Commercial Building with Basement Floor, Ground and Four Upper floors.
- One Common Toilet on each Floor from First floor onwards.
- Two Automatic Elevators of 8 Passengers each.
- RCC Framed Structure with Column, Beam and Slab layout.
- Laterite stone masonry (9" thk) for External walls and Solid Block (4" thk) Masonry for Internal walls.
- Ground floor shops are fitted with Rolling shutters.
- GI Railings of standard height for Passages & Staircase.
- Internal Ceiling and wall surfaces covered with single coat of plastering and Double coat plastering for External surfaces.
- Toilets are provided with sunken slabs with proper water proofing treatment and concealed Pipelining.
- Vitrified Tiled Flooring inside the Shops.
- Granite flooring for Staircases and Common areas.
- Designer Glazed Tiled wall surfaces in Toilets (up to 7ft Height)
- Antiskid tiled flooring for toilets.
- CP Plumbing Fittings in Toilets.
- White Coloured Sanitary Wares in Toilets.
- UPVC Frames with Fibrotech Shutters for Toilet Doors with Quality Fixtures.
- Acrylic Putty Finished Internal Emulsion Painted Internal Ceiling & Walls.
- Exterior Emulsion Paint for External Walls.
- Interlock Paving or VDF Concrete Flooring for Driveway & Carparking Yard.
- Provision of 2 KW power for each Shop.
- Nominal Electrical Points with DB provision inside the Premises.
- Electrical provision for AC inside the Shops.
- Modular Electrical Switches (Anchor or Equivalent) & Wires (RR/V Guard / Anchor).
- Electrical Fittings in Common Areas and in Car parking Yard.
- Generator Backup for Common Area Lightings, Services and inside the premises.
- Centralized CC Camera Network in common areas only.
- UG storage tank facility.
- Corporation water connection as well as Bore well water provision.
- Standard Fire Fighting provisions.
- Rain Water Harvesting System.
- STP provisions.
- Covered Roof Top at Terrace.
- Provision of Waterline and Sewage line for each shop.
- Communication line provision for each shop.

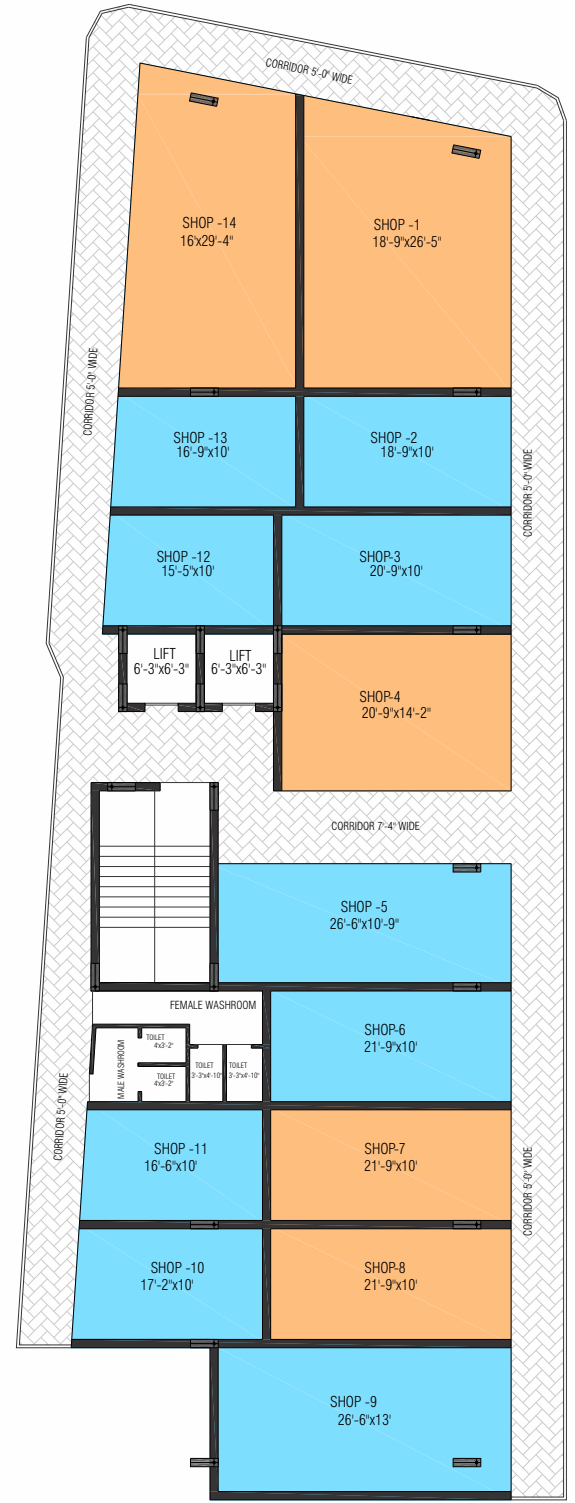
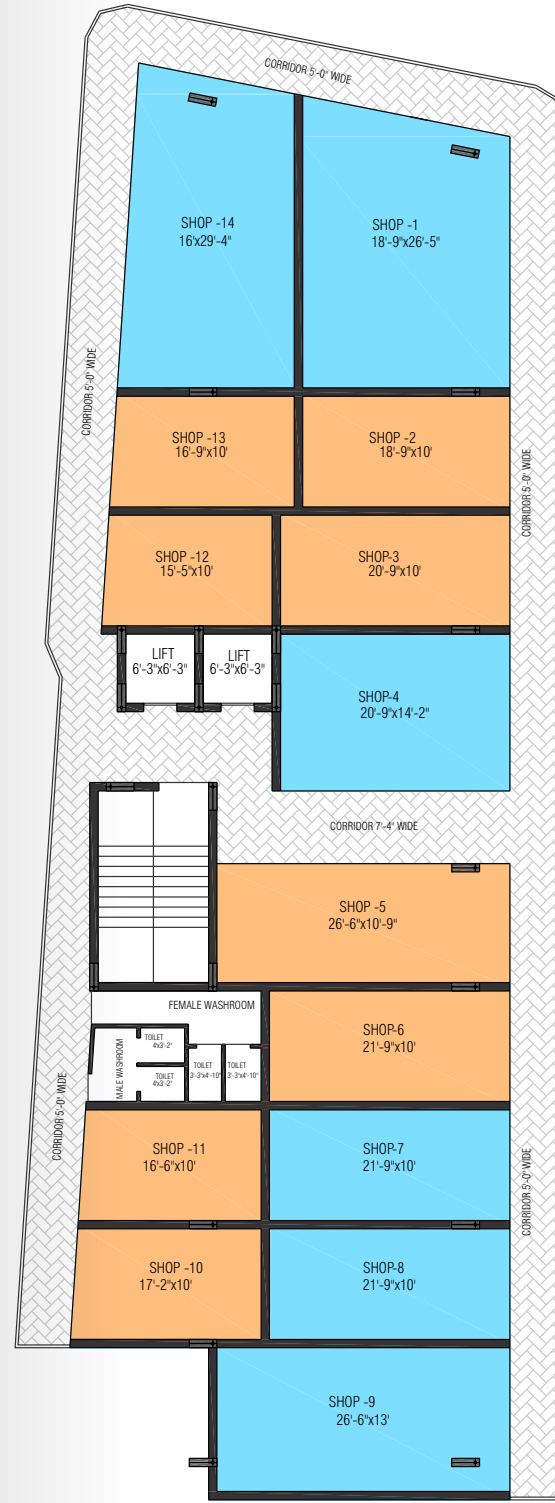
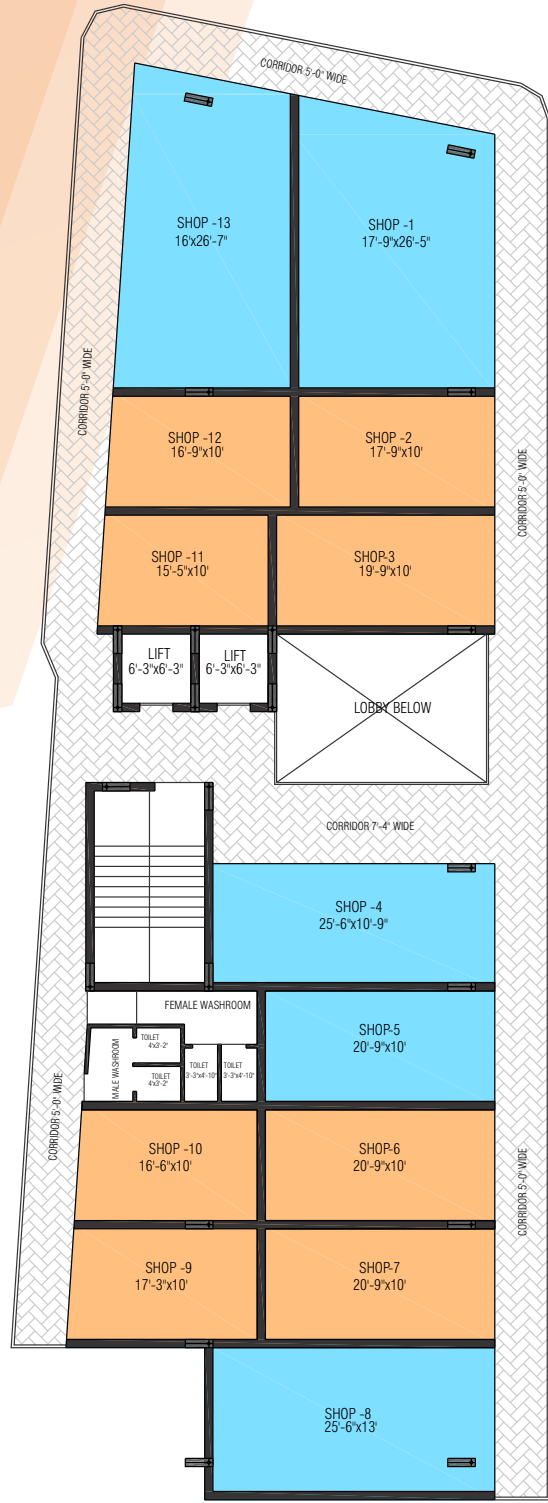


GROUND FLOOR PLAN



CROSS ROAD

SHOP NO.	SALABLE AREA
SHOP - 1	540.00
SHOP - 2	503.00
SHOP - 3	635.00
SHOP - 4	1130.00
SHOP - 5	968.00
SHOP - 6	1220.00



FIRST FLOOR PLAN

SHOP NO.	SALABLE AREA
SHOP - 1	637.00
SHOP - 2	273.00
SHOP - 3	313.00
SHOP - 4	409.00
SHOP - 5	325.00
SHOP - 6	318.00
SHOP - 7	318.00
SHOP - 8	519.00
SHOP - 9	267.00
SHOP - 10	259.00
SHOP - 11	242.00
SHOP - 12	253.00
SHOP - 13	615.00

SECOND FLOOR PLAN

SHOP NO.	SALABLE AREA
SHOP - 1	669.00
SHOP - 2	288.00
SHOP - 3	318.00
SHOP - 4	438.00
SHOP - 5	426.00
SHOP - 6	339.00
SHOP - 7	333.00
SHOP - 8	333.00
SHOP - 9	539.00
SHOP - 10	237.00
SHOP - 11	259.00
SHOP - 12	242.00
SHOP - 13	253.00
SHOP - 14	615.00

THIRD FLOOR PLAN

SHOP NO.	SALABLE AREA
SHOP - 1	669.00
SHOP - 2	288.00
SHOP - 3	318.00
SHOP - 4	438.00
SHOP - 5	426.00
SHOP - 6	339.00
SHOP - 7	333.00
SHOP - 8	333.00
SHOP - 9	539.00
SHOP - 10	237.00
SHOP - 11	259.00
SHOP - 12	242.00
SHOP - 13	253.00
SHOP - 14	615.00

FOURTH FLOOR PLAN

SHOP NO.	SALABLE AREA
SHOP - 1	669.00
SHOP - 2	288.00
SHOP - 3	318.00
SHOP - 4	438.00
SHOP - 5	426.00
SHOP - 6	339.00
SHOP - 7	333.00
SHOP - 8	333.00
SHOP - 9	539.00
SHOP - 10	237.00
SHOP - 11	259.00
SHOP - 12	242.00
SHOP - 13	253.00
SHOP - 14	615.00

COMPLETED PROJECTS



ASTORIA
Balmatta, Mangalore



ORION
Lobo Lane, Mangalore



ARIA
Alvares Road, Mangalore



MERCARA HEIGHTS
Bendore, Mangalore



OLIVE
Bejai Kapikad, Mangalore



EESHA
Lobo Lane, Mangalore



AADHEE
Lobo Lane, Mangalore



VIJAYA
Lobo Lane, Mangalore



HATHILL CREST
Hathill, Mangalore



SAI GRANDEUR
Jail Road, Mangalore



PUSHKAR
Car Street, Mangalore



OURANIA
Kadri Toll Gate, Mangalore



MINERVA
Bejai, Mangalore



DANUBE
Balmatta Road, Mangalore



SERENE
Bejai, Mangalore



HILLSIDE FRENS
Shivabagh, Mangalore



ADONIA
Alvares Road, Mangalore



MAURISHKA PALACE
Kadri Kambal, Mangalore



AADHEESH
Off M.G. Road, Mangalore



BROOKSIDE
Morgan's Gate, Mangalore



SAI PREM
Mannagudda, Mangalore



ATLANTIS
Bendoorwell, Mangalore



VASUNDHARA
Opp. Urva Marigudi Temple, Mangalore



REHOBOTH
Bejai, Mangalore



PARIN
Balmatta, Mangalore



AQUARIUS
Mallikatta, Mangalore



ROOPALI
Bendoorwell, Mangalore



AASHNA
Yemmekere, Mangalore



LENHIL FRENS
Kadri, Mangalore



SANSKRITI
Mangaladevi, Mangalore



MELODY
Bendoor, Mangalore



INSIGNIA
Valencia, Mangalore



SOLITAIRE
Hathill, Mangalore

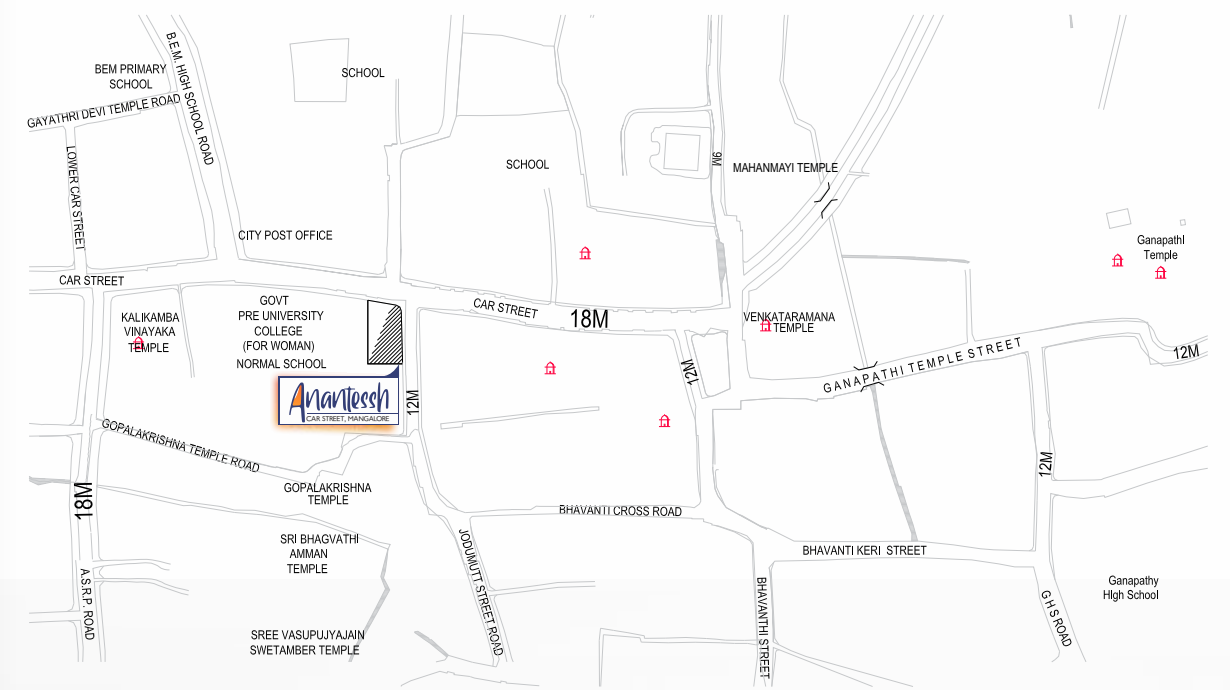


EMERALD BAY
Surathkal, Mangalore



MILESTONE 25
Balmaatta, Mangalore

LOCATION - MAP



ONGOING PROJECTS



HABITAT ONE 54
Derebail, Mangalore



Promoters:



1st Floor, New Milagres Mansion, Falnir Road, Mangalore- 1
Phone : +91 824 242 5454 / 242 3866
E-mail : sales@landtrades.in, info@landtrades.in

Contractor:



Architect:



PMC:

GOKUL RAJ

Structural Consultant:

ANIL HEGDE

Legal Advisor:

K.S. UDAYANARAYANA

For Bookings Contact:

+91 98807 42159 / +91 98450 84866 / +91 98861 99769



RERA No: PRM/KA/RERA/1257/334/PR/191220/003085

FIND US ON

 /landtradesdevelopers  @land_trades
www.landtrades.in

DISCLAIMER: THIS BROCHURE IS CONCEPTUAL AND IS NOT A LEGAL DOCUMENT. ALL MATERIALS, DIMENSIONS & DRAWINGS ARE APPROXIMATE.
INFORMATION SUBJECT TO CHANGE WITHOUT NOTICE. ACTUAL USABLE FLOOR SPACE MAY VARY FROM THE STATED FLOOR PLAN.
DRAWINGS NOT TO SCALE. THE DEVELOPER RESERVES THE RIGHT TO MAKE REVISIONS.